



**CLP Structures**

STRUCTURAL ENGINEERING CONSULTANTS

EMAIL: mail@CLP-Structures.co.uk  
TEL: 0117 3706357

Client: <b>ELITE CONCRETE</b>	Original Scale 1:50	Drawn CEL	Checked	Rev	Description	By	Date	Chk'd
	Drawing No. <b>443-CLP103</b>	Date February 2016						
Project: <b>Wet Sand Storage</b>	Title: <b>CALCULATION SUMMARY</b>			Purpose of Issue	Rev	Date	Auth	

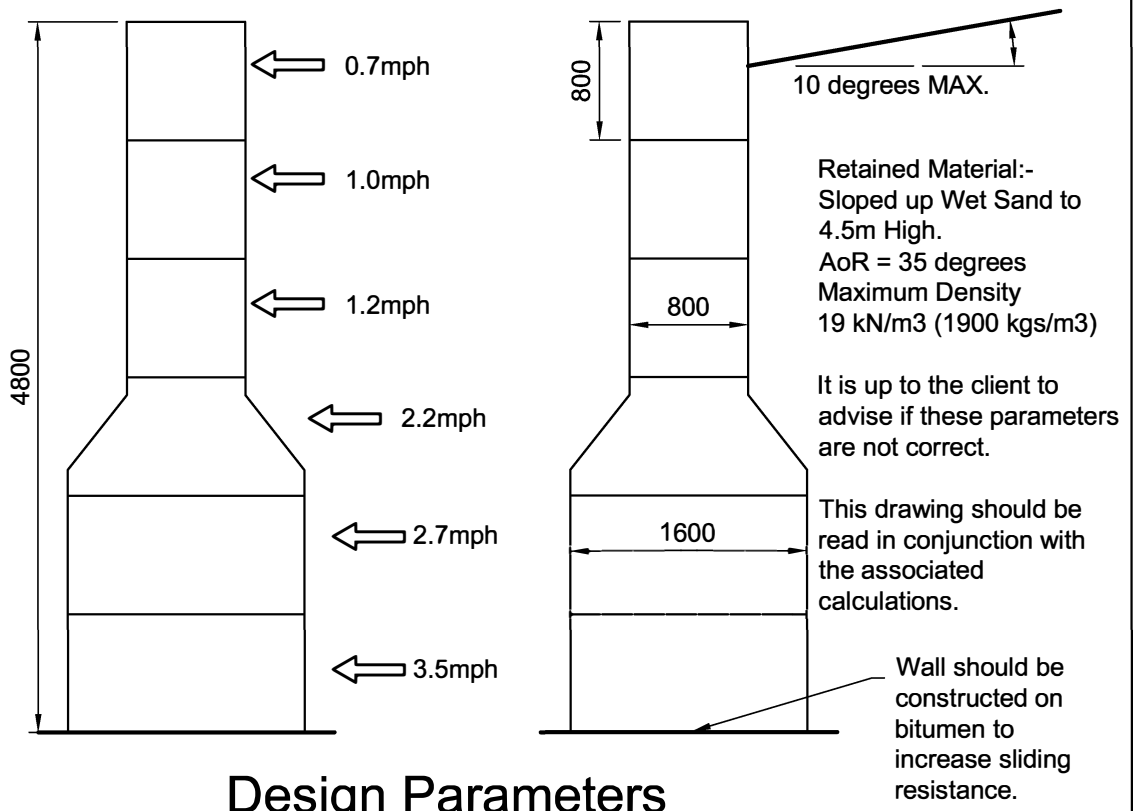
Allowable impact load speed based on:-

Vehicle (Maximum operating weight 20t)

Total allowable deflection - 100mm.

NOTE:-  
Impact loads are the expected loads imposed on the wall by loading shovels, backhoes, buckets etc. carrying out NORMAL procedures of loading and unloading bays.

NOTE:-  
Wall has **not** been designed for retained material to be compacted by vehicle driving over or on top of the retained material.

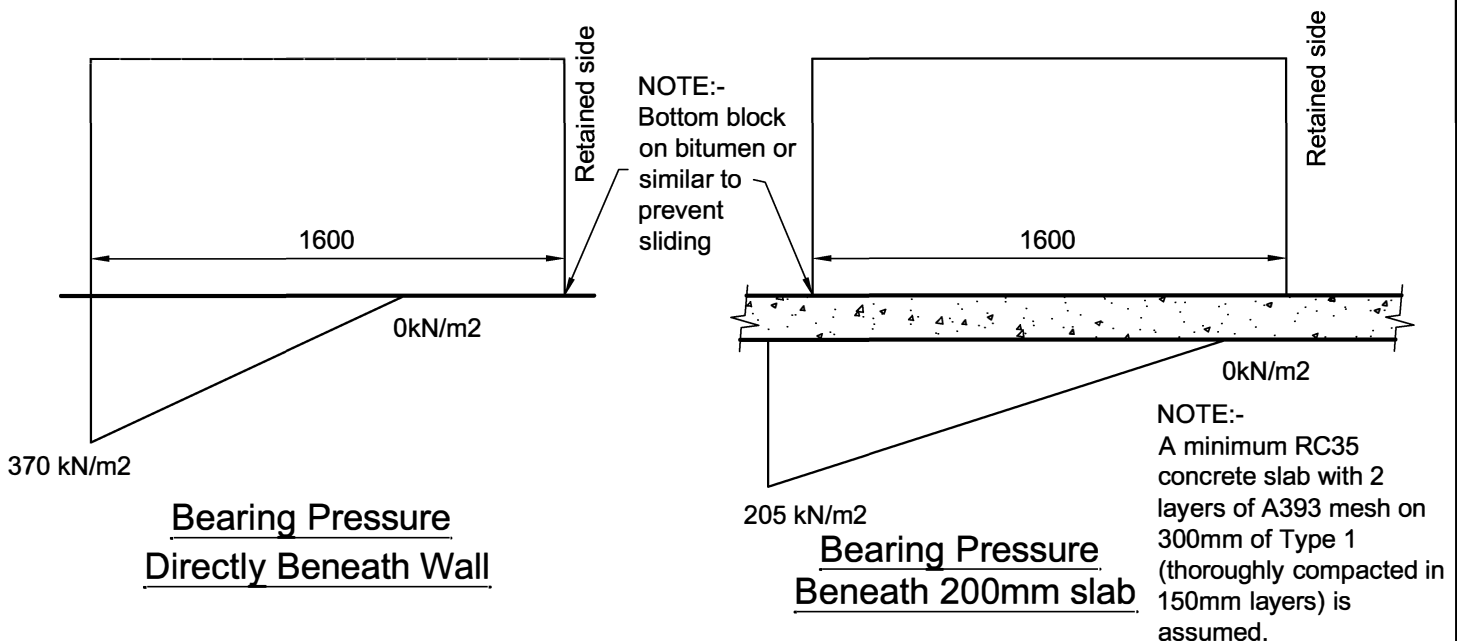


## Design Parameters

(1:50)

NOTE:-

The bearing pressure beneath the wall is shown below. It is up to the client to ensure the ground is adequate, alternatively a foundation or slab may be designed to suit allowable ground bearing pressures if required.



Bearing Pressure  
Directly Beneath Wall

Bearing Pressure  
Beneath 200mm slab