

STRUCTURAL ENGINEERING CONSULTANTS

EMAIL: mail@CLP-Structures.co.uk
TEL: 0117 3706357

Client: ELITE CONCRETE	Original Scale 1:50	Drawn CEL	Checked	Rev	Description	By	Date	Chk'd
	Drawing No. 439-CLP106	Date February 2016						
Project:	Title: CALCULATION SUMMARY	Purpose of Issue			Rev	Date	Auth	

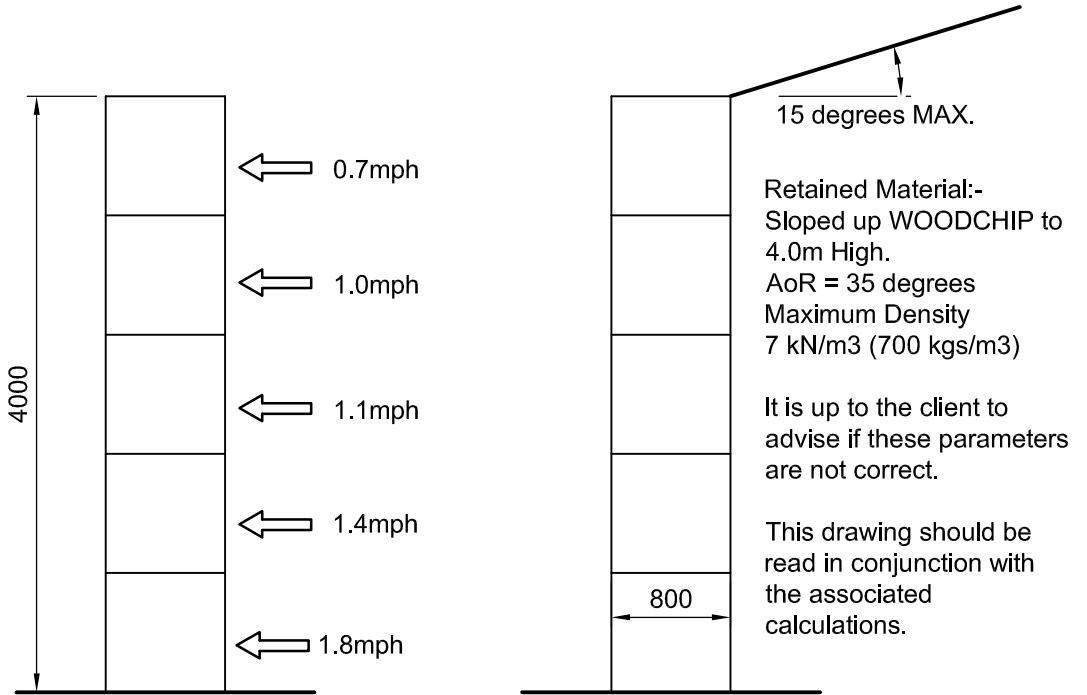
Allowable impact load speed based on:-

Vehicle (Maximum operating weight 20t)

Total allowable deflection - 100mm.

NOTE:-
Impact loads are the expected loads imposed on the wall by loading shovels, backhoes, buckets etc. carrying out NORMAL procedures of loading and unloading bays.

NOTE:-
Wall has **not** been designed for retained material to be compacted by vehicle driving over or on top of the retained material.

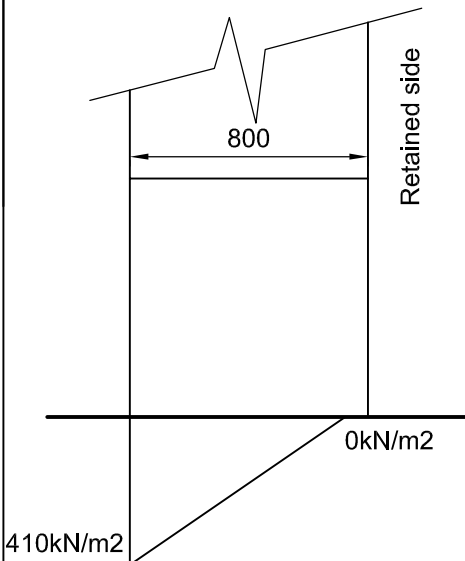


Design Parameters

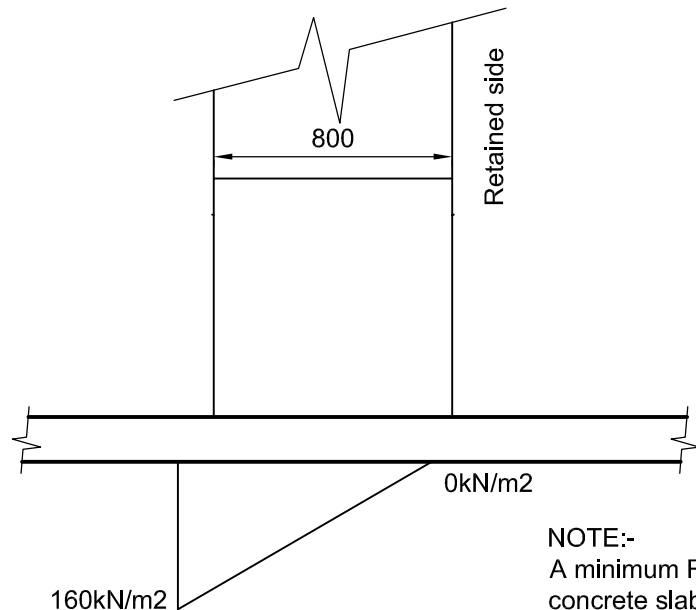
(1:50)

NOTE:-

The bearing pressure beneath the wall is shown below. It is up to the client to ensure the ground is adequate, alternatively a foundation or slab may be designed to suit allowable ground bearing pressures if required.



Bearing Pressure
Directly Beneath Wall



Bearing Pressure
Beneath 200mm slab

NOTE:-
A minimum RC35 concrete slab with 2 layers of A393 mesh on 300mm of Type 1 (thoroughly compacted in 150mm layers) is assumed.