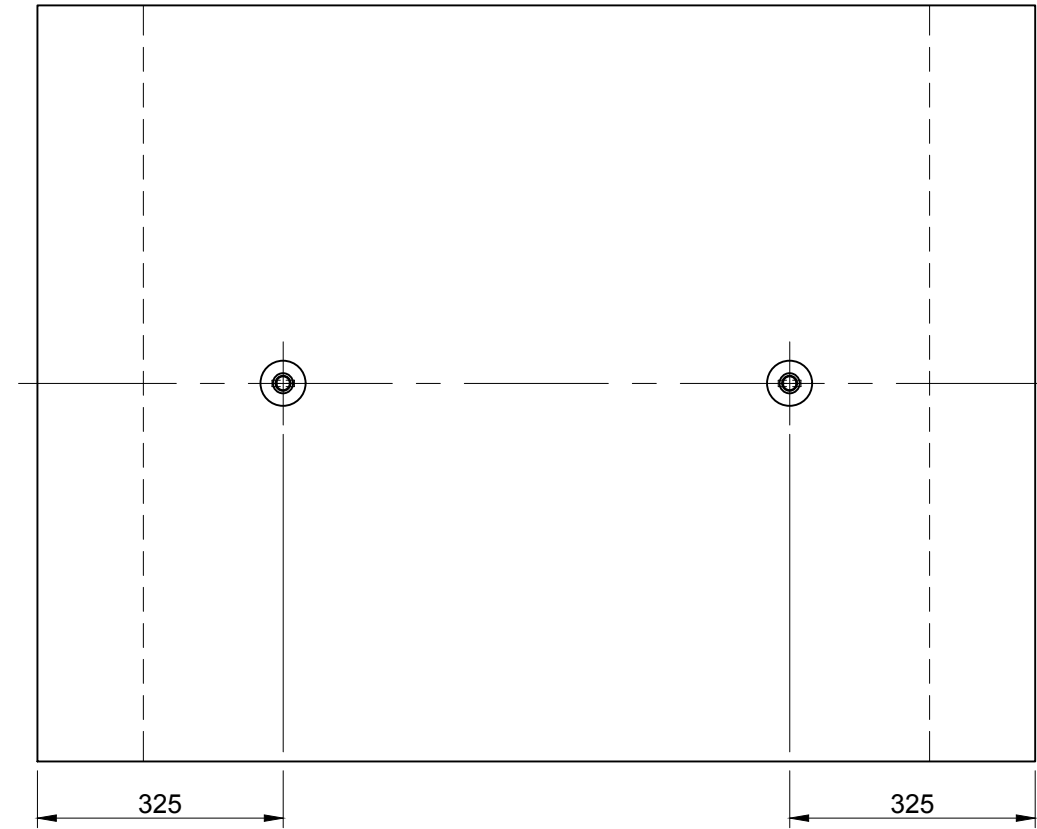
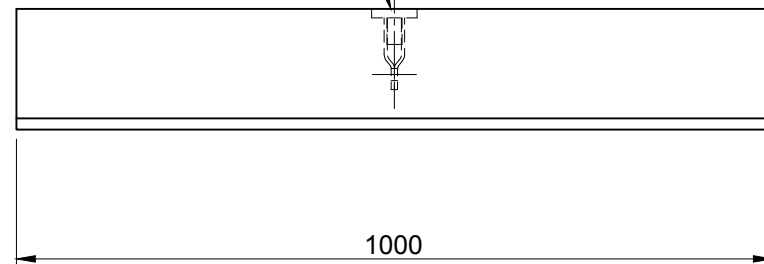


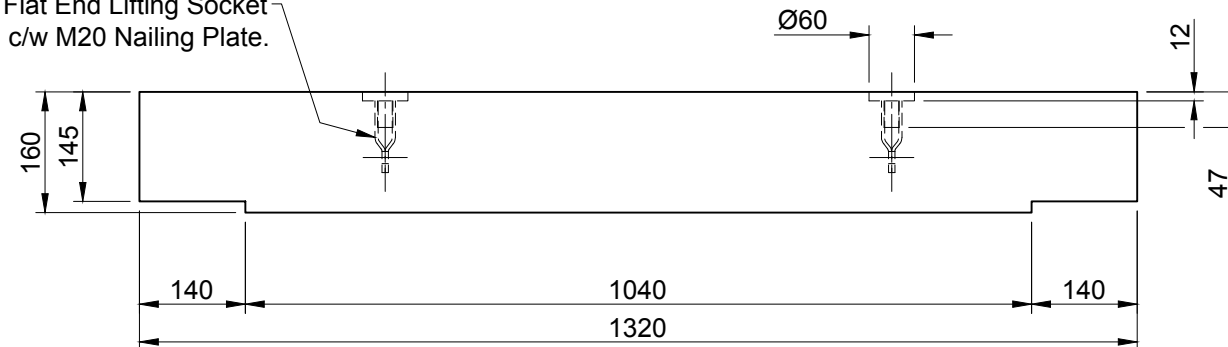
Weight : 480kg Approx.



Recess Socket for M20 Nailing Plate.



M20 Flat End Lifting Socket c/w M20 Nailing Plate.



- 50N/mm<sup>2</sup> Concrete.
- Lids reinforced with 16mm bar at 100mm centres.
- Butt jointed.
- Tested to BS EN 124 Class B125 (group 2) - Designed to Class C250 (group 3).
- No problem with modifying units on site; for example - drilling and fixing brackets, core drilling to take plastic pipes, cutting and re-casting for corners and flat ends.
- 3mm neoprene recommended as a gasket between lid and channels in heavily trafficked areas.

										TITLE		Channel Lid 1000 x 1320 x 160		ELITE PRECAST CONCRETE LTD HALESFIELD 9, TELFORD SHROPSHIRE TF7 4QW											
										Elite Product Code : 1001															
REV	DATE	REASON FOR ISSUE	DRN	APP	REV	DATE	REASON FOR ISSUE	DRN	APP	CTC	RMD	DRN	CTC	CHKD	RMD	DATE	21-04-16	SIZE	A3	SCALE	1:10	DRG	EPC-LID-005	REV	O