

Allowable impact load speed based on:-

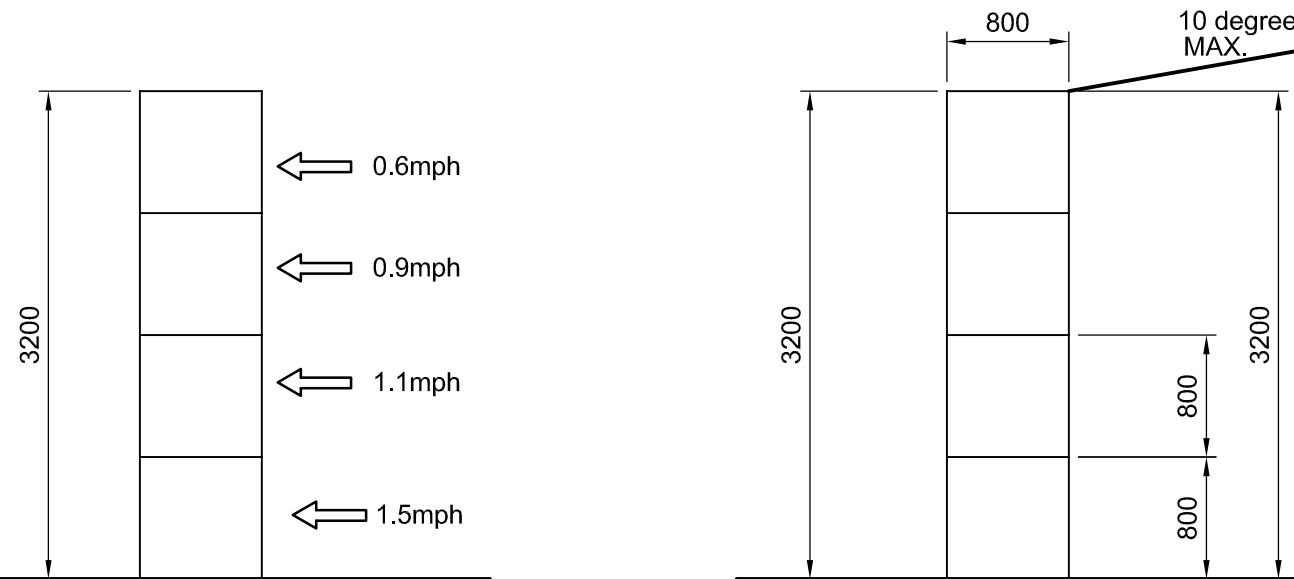
Max. Permissible Impact Loads

Vehicle (Maximum operating weight 20t)

Total allowable deflection - 100mm.

NOTE:-
Impact loads are the expected loads imposed on the wall by loading shovels, backhoes, buckets etc. carrying out NORMAL procedures of loading and unloading bays.

NOTE:-
Wall has **not** been designed for retained material to be compacted by vehicle driving over or on top of the retained material.

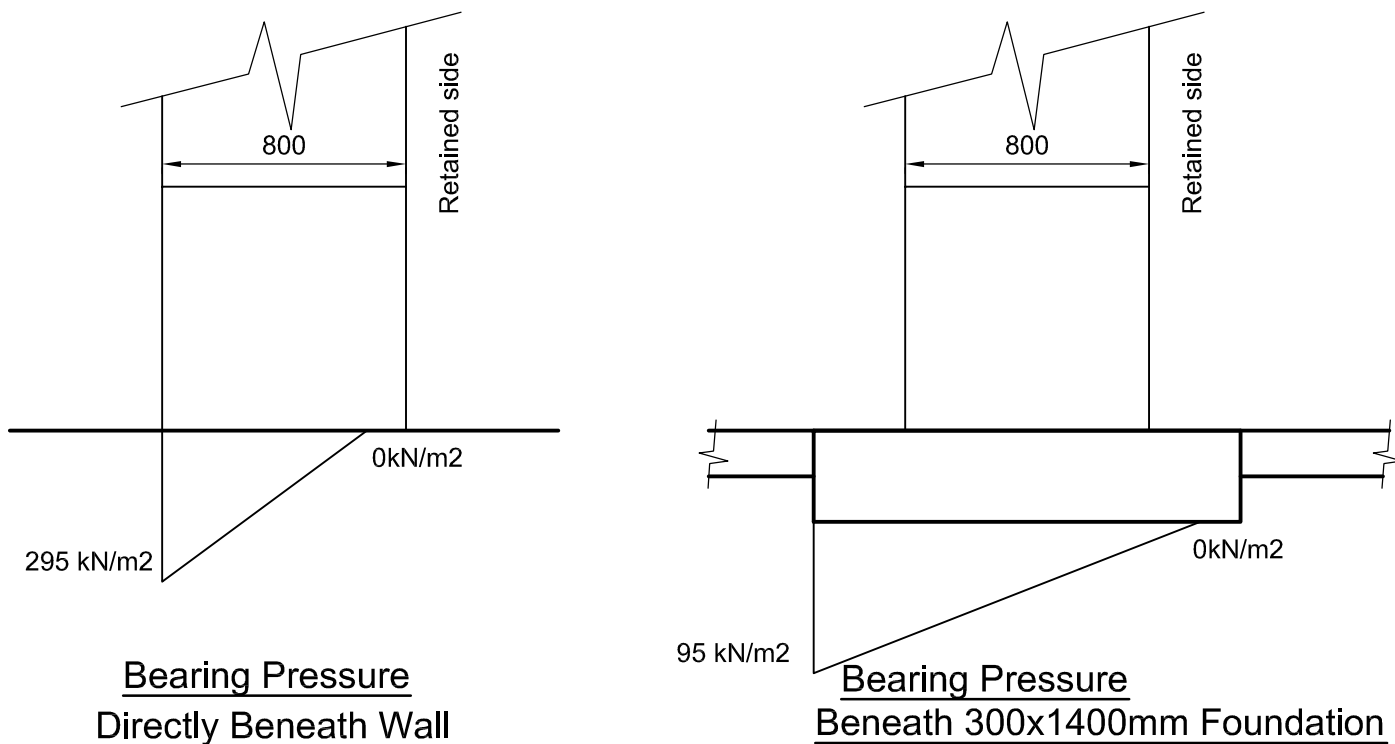


Retained Material:-
Lightweight Recyclables up to 3.2m high and sloped at a maximum of 10 degrees.
AoR = 30 degrees
Maximum Density 9 kN/m³ (900 kgs/m³)

It is up to the client to advise if these parameters are not correct.

Design Parameters (1:50)

NOTE:-
The bearing pressure beneath the wall is shown below. **It is up to the client to ensure the ground is adequate.**

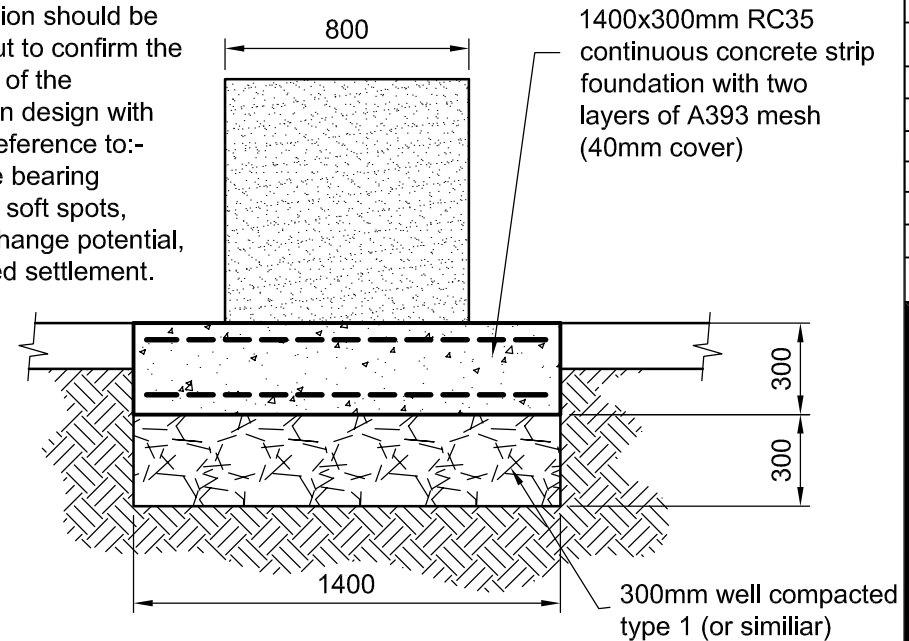


Bearing Pressures

(1:25)

NOTE:-

A geotechnical soils investigation should be carried out to confirm the suitability of the foundation design with specific reference to:-
Allowable bearing pressure, soft spots, volume change potential, anticipated settlement.



Foundation Details

(1:25)

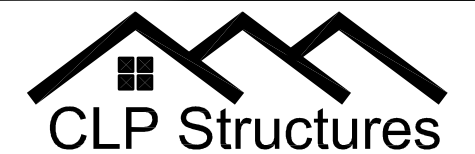
NOTES:-

1. The contractor should take all necessary measurements on site.
2. All dimensions shown on this drawing are approximate and for structural calculation purposes only.
3. Dimensions on this drawing should not be used for fabrication purposes.
4. Do not scale this drawing.
5. This drawing should be read in conjunction with the calculations.

IMPORTANT NOTE

The existing slab and ground have not been investigated by CLP structures, the pressures exerted on the ground and slab are shown on this drawing, however **it is up to the client to satisfy himself that the existing ground and slab are adequate to support these loads.**

Rev	Description	By	Date	Chk'd
Purpose of Issue	Rev	Date	Auth	



STRUCTURAL ENGINEERING CONSULTANTS

EMAIL: mail@CLP-Structures.co.uk
TEL: 0117 3706357

Client
Elite Precast Concrete Ltd.

Project
Lightweight Recyclables
3.2m High Legato

Title
Wall Design Parameters
and Limitations

Original Scale As noted	Drawn CEL Date June 2017	Rev - Checked
----------------------------	--------------------------------	---------------

Drawing Number 594-01