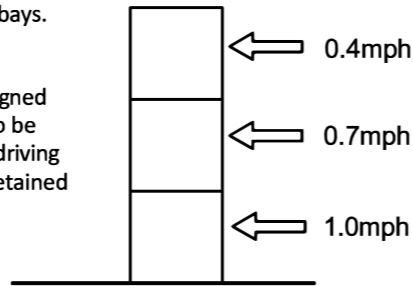


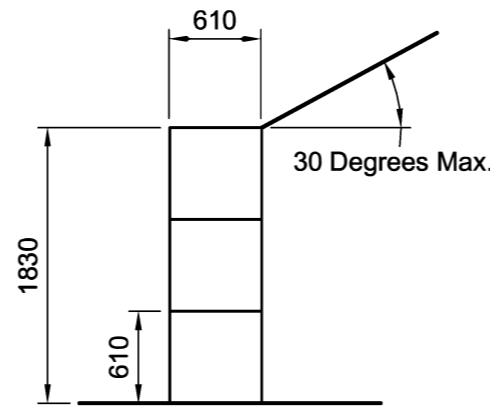
Max. Permissible Impact Loads

NOTE:-
Impact loads are the expected loads imposed on the wall by loading shovels, backhoes, buckets etc. carrying out NORMAL procedures of loading and unloading bays.

NOTE:-
Wall has **not** been designed for retained material to be compacted by vehicle driving over or on top of the retained material.



Allowable impact load speed based on a total deflection of 100mm and a vehicle weight of 20t



Retained Material:-
Filter Cake
AoR = 30 degrees
Maximum Density
7 kN/m³ (700kgs/m³)

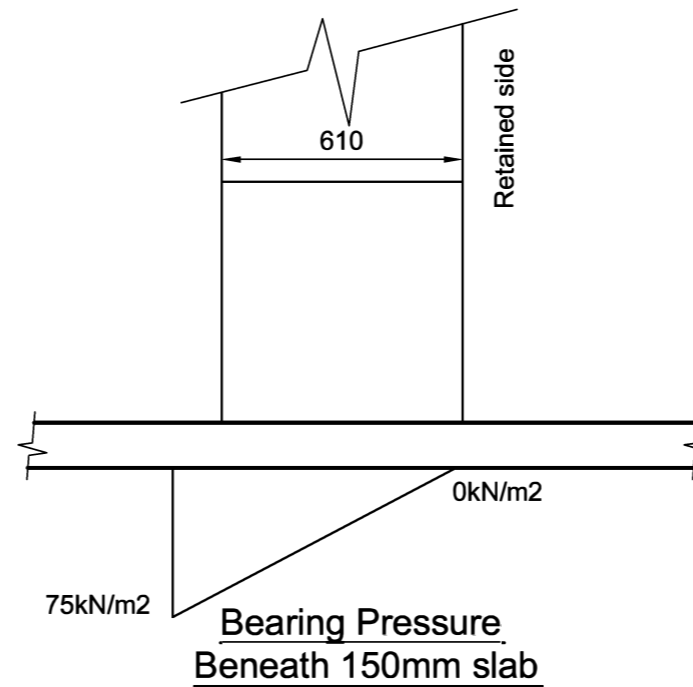
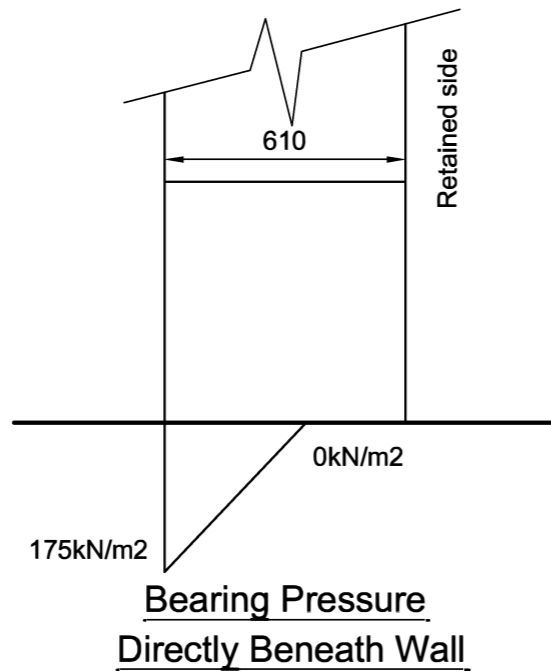
It is up to the client to advise these parameters are not cc

Design Parameters

(1:50)

NOTE:-

The bearing pressure beneath the wall is shown below. **It is up to the client to ensure the ground and slab is adequate**, alternatively a foundation may be designed to suit allowable ground bearing pressures if required.



Bearing Pressures

(1:25)

NOTES:-

1. The contractor should take all necessary measurements on site.
2. All dimensions shown on this drawing are approximate and for structural calculation purposes only.
3. Dimensions on this drawing should not be used for fabrication purposes.
4. Do not scale this drawing.
5. This drawing should be read in conjunction with the calculations.

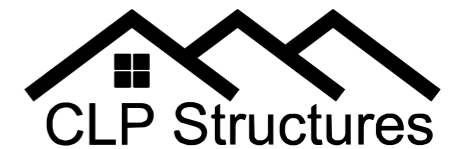
IMPORTANT NOTE

The existing slab and ground have not been investigated by CLP structures, the pressures exerted on the ground and slab are shown on this drawing, however **it is up to the client to satisfy himself that the existing ground and slab are adequate to support these loads.**

IMPORTANT NOTE

The wall has been designed to retain a specific material with a specific density and angle of repose. It is up to the client to ensure that the material retained on site does not exceed these designed parameters, failure to do so may result in the collapse of the wall.

Rev	Description	By	Date	Chk'd
	Purpose of Issue	Rev	Date	Auth



STRUCTURAL ENGINEERING CONSULTANTS
EMAIL: mail@CLP-Structures.co.uk
TEL: 0117 3706357

Client

Elite Precast Concrete Ltd.

Project

Sludge Cake – 1.83m
high Vee block walls

Title

Wall Design Parameters
and Limitations

Original Scale As noted	Drawn CEL Date July16	Rev – Checked
----------------------------	-----------------------------	---------------

Drawing Number 495-07