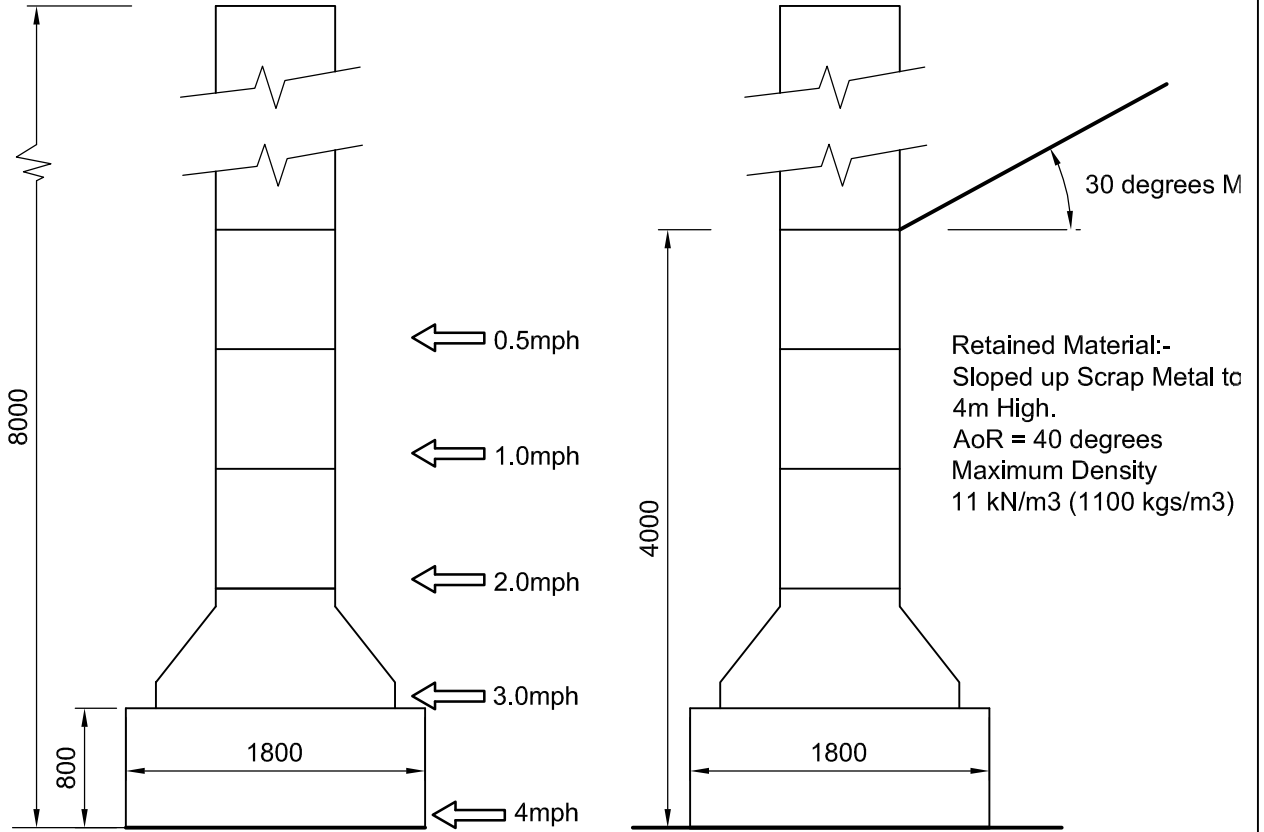


STRUCTURAL ENGINEERING CONSULTANTS

EMAIL: mail@CLP-Structures.co.uk  
TEL: 0117 3706357

Client: <b>ELITE CONCRETE</b>	Original Scale 1:25	Drawn CEL Date Dec 2014	Checked	Rev	Description	By	Date	Chk'd
	Drawing No. <b>295-007-02</b>	Rev.						
Project:	Title: <b>8m High With Footblock</b>			Purpose of Issue	Rev	Date	Auth	

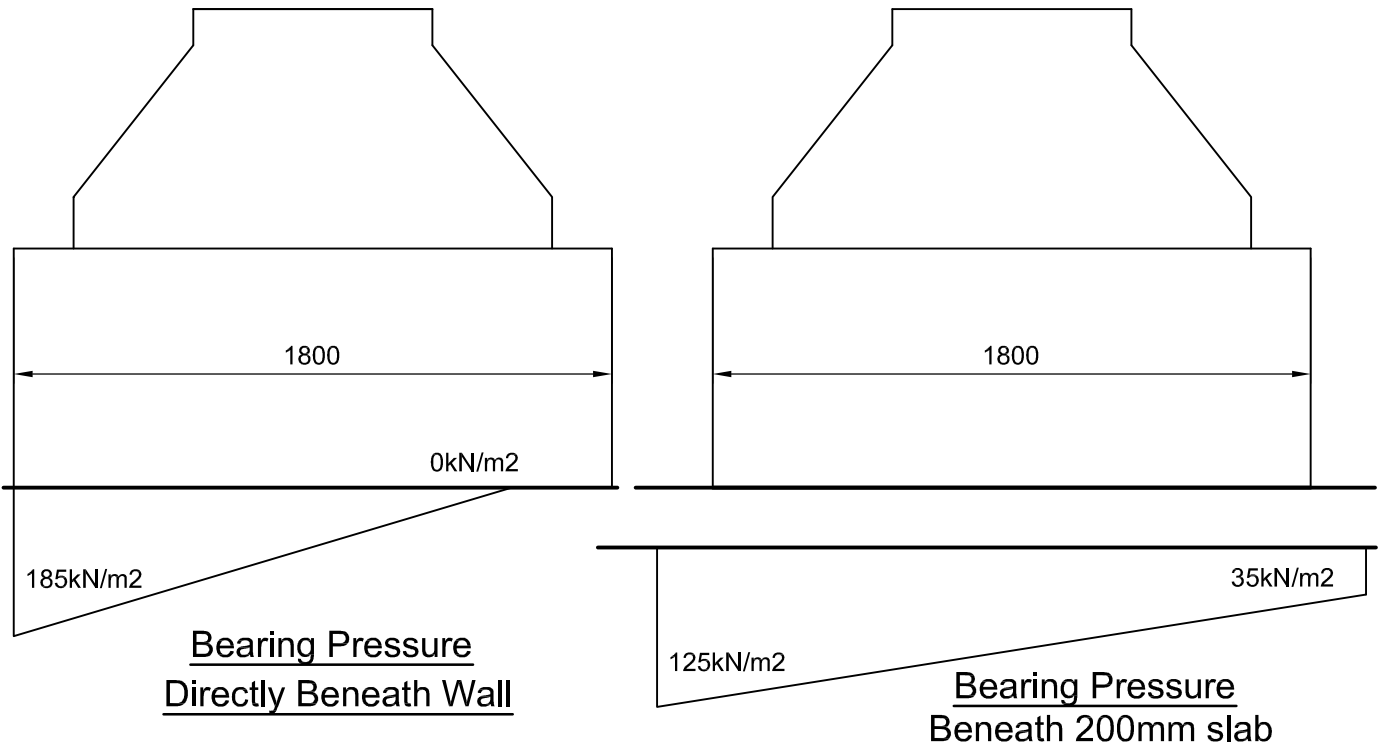


Allowable impact load speed based on a total deflection of 150mm and a vehicle weight of 20t

### Design Parameters (1:50)

**NOTE:-**

Minimum allowable ground bearing pressure beneath the wall is shown below. It is up to the client to ensure this can be achieved. If ground conditions dictate a lower allowable ground bearing pressure then the designer should be contacted immediately and a revised foundation can be designed to suit.



Bearing Pressure Directly Beneath Wall

Bearing Pressure Beneath 200mm slab