

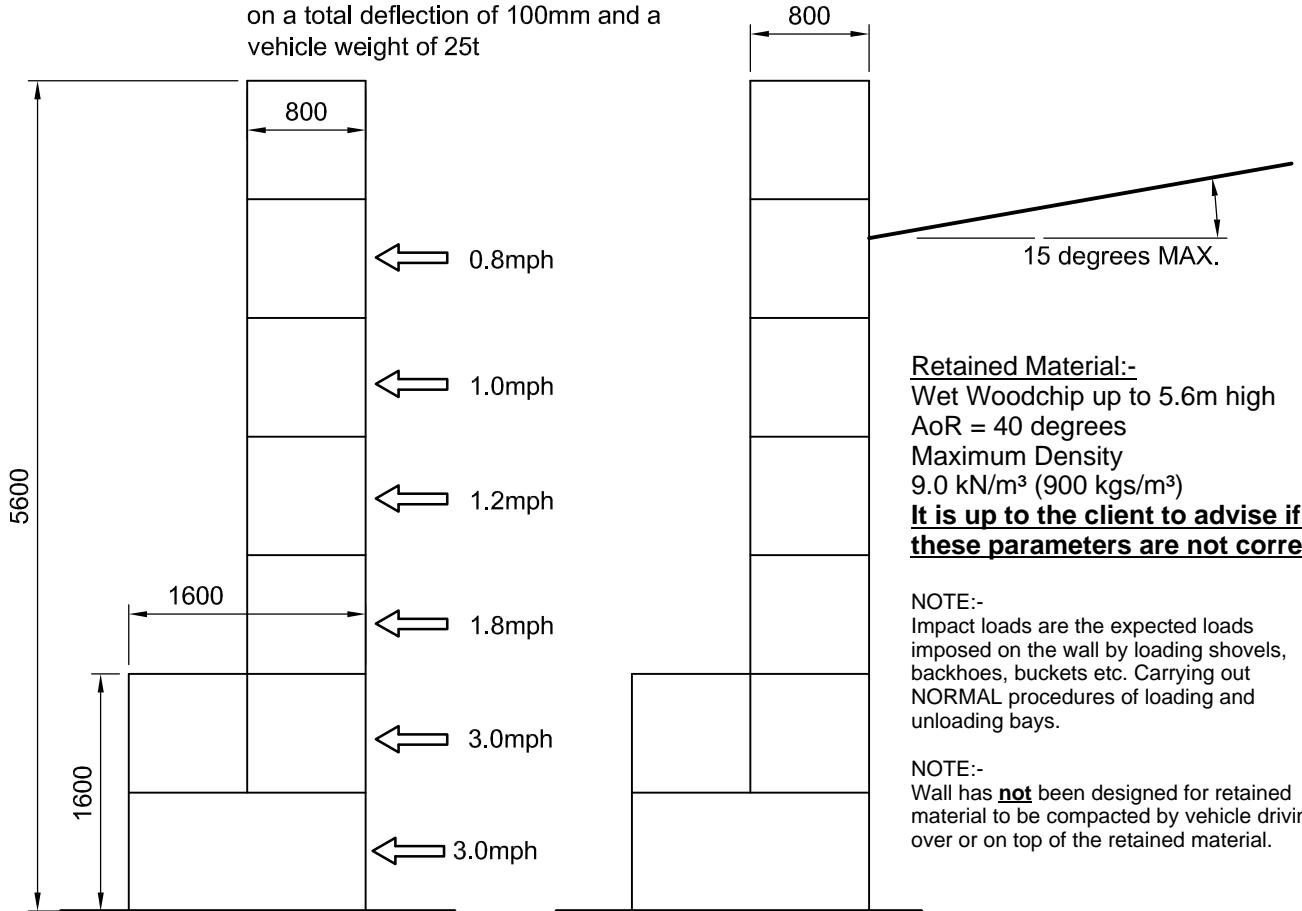


STRUCTURAL ENGINEERING CONSULTANTS

EMAIL: mail@CLP-Structures.co.uk
TEL: 0117 3706357

Client: ELITE CONCRETE	Original Scale 1:50	Drawn CEL	Checked	Rev	Description	By	Date	Chk'd
	Drawing No. 390-05	Date SEPT 2015						
Project: WOODCHIP BAY	Title: CALCULATION SUMMARY				Purpose of Issue	Rev	Date	Auth

Allowable impact load speed based on a total deflection of 100mm and a vehicle weight of 25t



Retained Material:-
Wet Woodchip up to 5.6m high
AoR = 40 degrees
Maximum Density 9.0 kN/m³ (900 kgs/m³)
It is up to the client to advise if these parameters are not correct.

NOTE:-
Impact loads are the expected loads imposed on the wall by loading shovels, backhoes, buckets etc. Carrying out NORMAL procedures of loading and unloading bays.

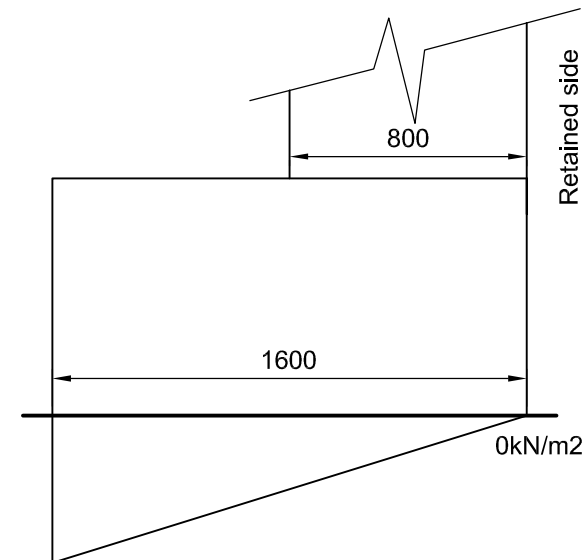
NOTE:-
Wall has **not** been designed for retained material to be compacted by vehicle driving over or on top of the retained material.

Design Parameters

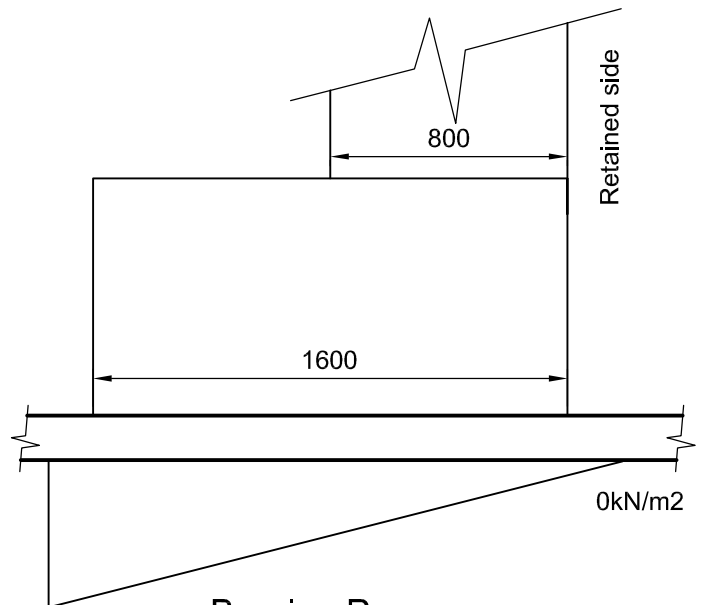
(1:50)

NOTE:-

The bearing pressure beneath the wall is shown below. It is up to the client to ensure the ground is adequate, alternatively a foundation may be designed to suit allowable ground bearing pressures if required.



246kN/m² Bearing Pressure Directly Beneath Wall



176kN/m² Bearing Pressure Beneath 150mm slab