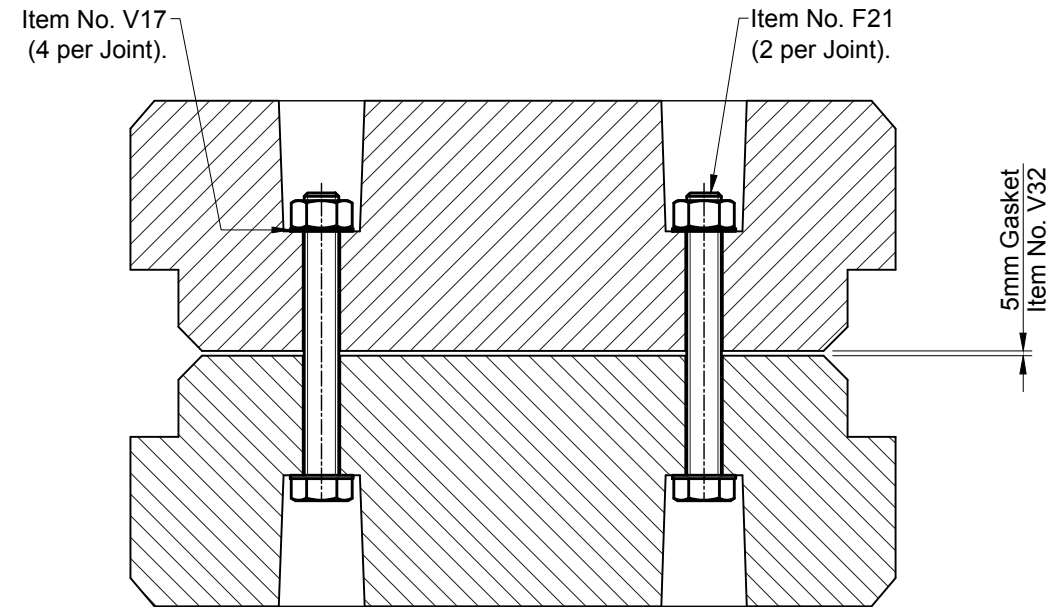
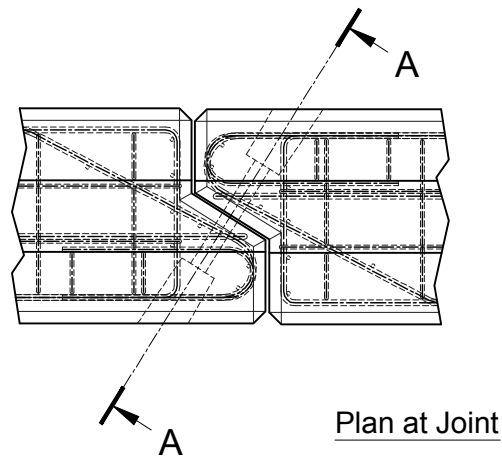
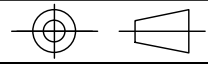


PROJECTION



Enlarged Section A - A
Detail Identical Both Ends

- Item No. V17 - Type G Washer 24 / 72 / 6
- Item No. F21 - M24 / 320 / Black 8.8 Grade Nut & Bolt.

Notes

1. This drawing to be read in conjunction with drawings 149, 150, 151 & 152.
2. Item F21 to be tightened to a torque of 60Nm Min, 70Nm Max.

					O	12.02.14	For Information		CTC RD
REV	DATE	REASON FOR ISSUE	DRN	APP	REV	DATE	REASON FOR ISSUE	DRN	APP
TITLE :					ELITE PRECAST CONCRETE LIMITED				
Temporary Vertical Concrete Barrier (TVCB)					HALESFIELD 9, TELFORD				
Intermediate Unit - Joint Details					SHROPSHIRE TF7 4QW				
Elite Product Code : -									
DRN :	CTC	CHKD :	RD	DATE :					
					DRG	153	REV	O	